

AP Drawing Portfolio

Christopher Talley

2021



Image 1

Sustained Investigation

Height: 16 inches

Width: 20 inches

Material(s): Artist Loft acrylic paint on canvas, various sized brushes.

Process(es): Burnt umber underpainting, basic shapes, detail, shadow, highlights, from background to foreground.



Image 2

Sustained Investigation

Height: 12 inches

Width: 12 inches

Material(s): Artist Loft acrylic paint, canvas, various sized brushes and a sponge

Process(es): Blue underpainting, color basic shapes, shadows, highlights, detail, foreground to fill space



Image 3

Sustained Investigation

Height: 8 inches

Width: 10 inches

Material(s): Artist Loft acrylic paint, canvas, various sized brushes

Process(es): Black background, blue shapes, layer in color from dark to light, shadows and highlights/detail



Image 4

Sustained Investigation

Height: 10 inches

Width: 7 inches

Material(s): Sketchbook, pencil, pen

Process(es): pencil sketch, basic pen linework, notes to help with ideas for later piece



Image 5

Sustained Investigation

Height: 14 inches

Width: 11 inches

Material(s): Artist Loft acrylic paint, canvas, various sized brushes

Process(es): Blue underpainting, bridge shape, surrounding bushes, grass, shadows and highlights, detail, sky

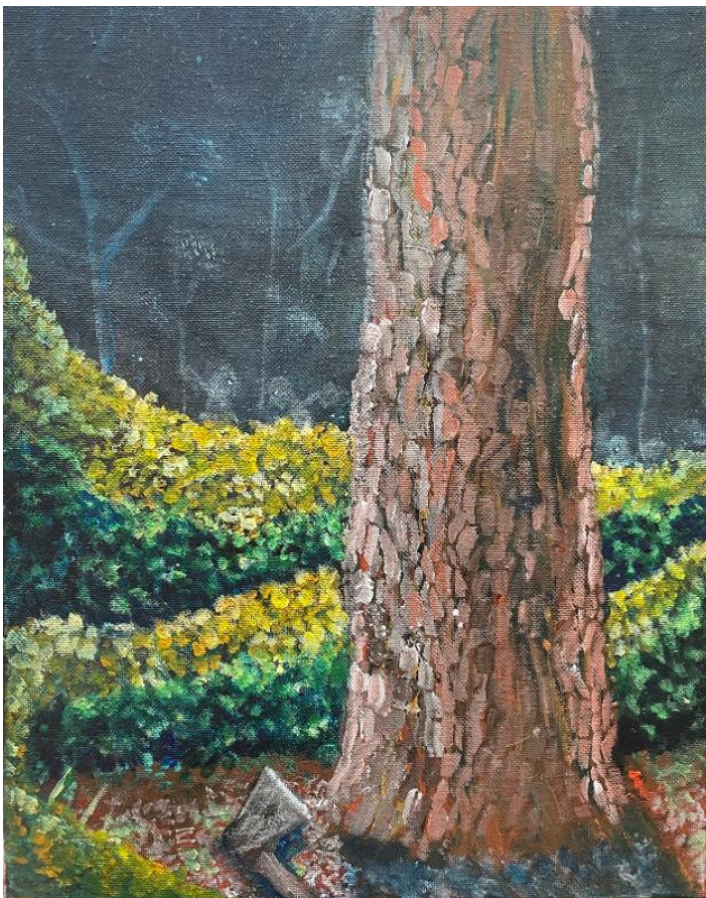


Image 6

Sustained Investigation

Height: 14 inches

Width: 11 inches

Material(s): Artist Loft acrylic paint, canvas, various sized brushes

Process(es): black background with ghosts, flower bushes, tree, shadows, highlights, details, black wash

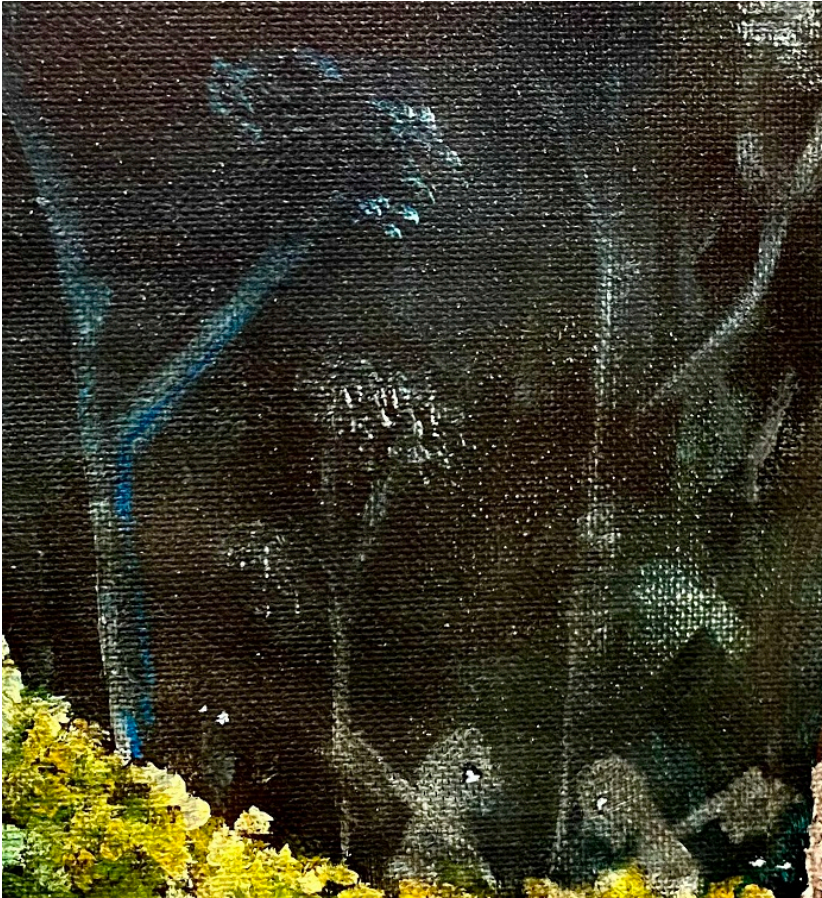


Image 7

Sustained Investigation

Height: 14 inches

Width: 11 inches

Material(s): Artist Loft acrylic paint, canvas, various sized brushes

Process(es): black background, grey shadows represent lumberjacks destroying forest, thick black wash

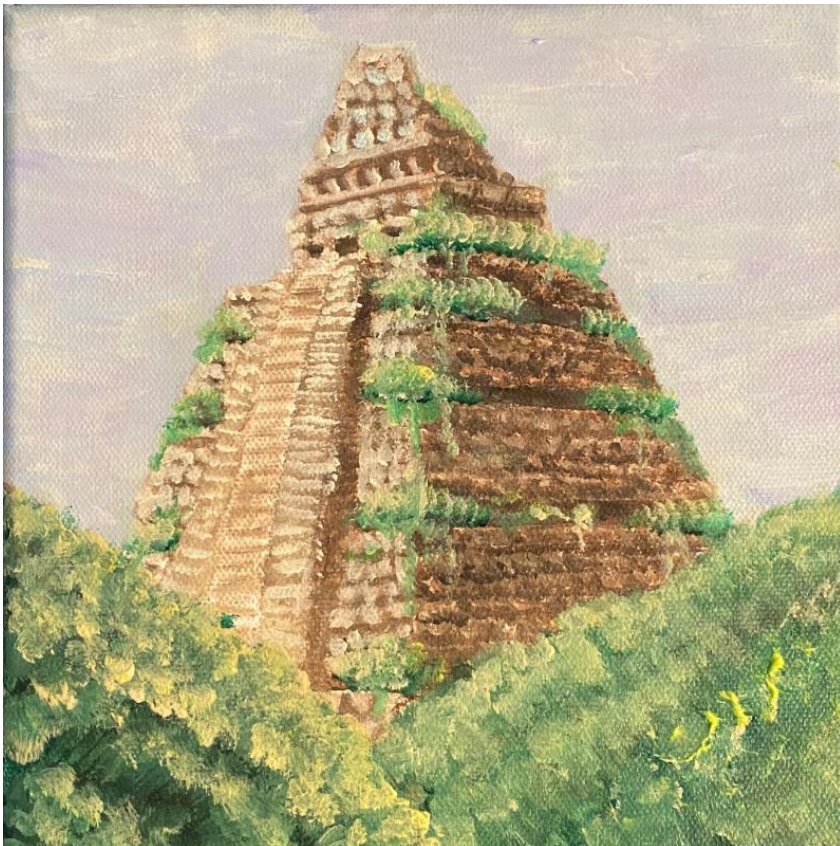


Image 8

Sustained Investigation

Height: 8 inches

Width: 8 inches

Material(s): I used Artist Loft acrylic paint on canvas with a number of very small paint brushes and a sponge.

Process(es): Started with a burnt umber underpainting before layering in the bricks, sky, and foliage with color.



Image 9

Sustained Investigation

Height: 8 inches

Width: 10 inches

Material(s): Artist Loft acrylic paint, canvas, various sized brushes

Process(es): Lime underpainting, bushes/trees in background, shadows, dotted ground, chair, more shadows/details



Image 10

Sustained Investigation

Height: 10 inches

Width: 7 inches

Material(s): Sketchbook, pencil, pen

Process(es): pencil outline, pen linework, notes for possibilities for investigation pieces, used chair idea



Image 11

Sustained Investigation

Height: 12.5 inches

Width: 12.5 inches

Material(s): Artist Loft acrylic paint, watercolor, Copic marker, pencil, pen

Process(es): pen/pencil outline, paint basic colors, marker details and shadows/silhouettes



Image 12

Sustained Investigation

Height: 12.5 inches

Width: 12.5 inches

Material(s): Artist Loft acrylic paint, watercolor, Copic marker

Process(es): pen outline, paint soft shadows, marker to make unsettling pattern/eye of camera



Image 13

Sustained Investigation

Height: 10 inches

Width: 7 inches

Material(s): Sketchbook, charcoal pencil, pen, Prisma Color colored pencils

Process(es): two boxes, recreate landscape with pencil and colored pencil, notes for future pieces on color



Image 14

Sustained Investigation

Height: 12 inches

Width: 12 inches

Material(s): Artist Loft acrylic paints, canvas, various sized brushes, sponge

Process(es): Outline of buildings on either side, sponged fog/clouds, windows, then shading and detail



Image 15

Sustained Investigation

Height: 10 inches

Width: 7 inches

Material(s): Sketchbook, charcoal pencil, pen, Prisma Color colored pencils

Process(es): pencil sketch, added color to anything to do with life, notes for future possibilities

Written Evidence

Sustained Investigation

Identify the question(s) or inquiry that guided your sustained investigation.

Describe how your sustained investigation shows evidence of practice, experimentation, and revision guided by your question(s) or inquiry.

Response:

I have always been in awe of the grasp nature continually holds on this planet. The inevitability of nature to consume all that has been created by man inflicts a fear of unimportance on us. However, the consistency of nature is somewhat comforting. In these pieces, I am demonstrating the effect that unyielding nature has had and could have on man-made structures: a battle between rigid, intentional architecture and the natural state of the land. Most of my works are created with acrylic paint on rough canvas to further demonstrate the wildness of nature through varying texture, showing the beauty in inconsistency. Others demonstrate this divide through varying colors, or the lack thereof. I efficiently used the ideas formulated in my sketches to amalgamate these concepts into a finished product. I incorporate both literal interactions between man made structures, and symbolic interactions through obscure/unnatural occurrences. I have accentuated the peacefully destructive wrath of nature over man's creations, creating something entirely new; the beauty of both chaos and structure.



Work 1

Selected Works

Height: 16 inches

Width: 20 inches

Idea(s): An old, overgrown road, surrounded by trees and tall grass sprouting through the pavement

Material(s): Artist Loft acrylic paint on canvas, various sized brushes.

Process(es): Burnt umber underpainting, basic shapes, detail, shadow, highlights, from background to foreground.



Work 2

Selected Works

Height: 8 inches

Width: 10 inches

Idea(s): An abandoned car left there as nature takes back the area. Trees and tall grass growing over it.

Material(s): Artist Loft acrylic paint, canvas, various sized brushes

Process(es): Black background, blue shapes, layer in color from dark to light, shadows and highlights/detail



Work 3

Selected Works

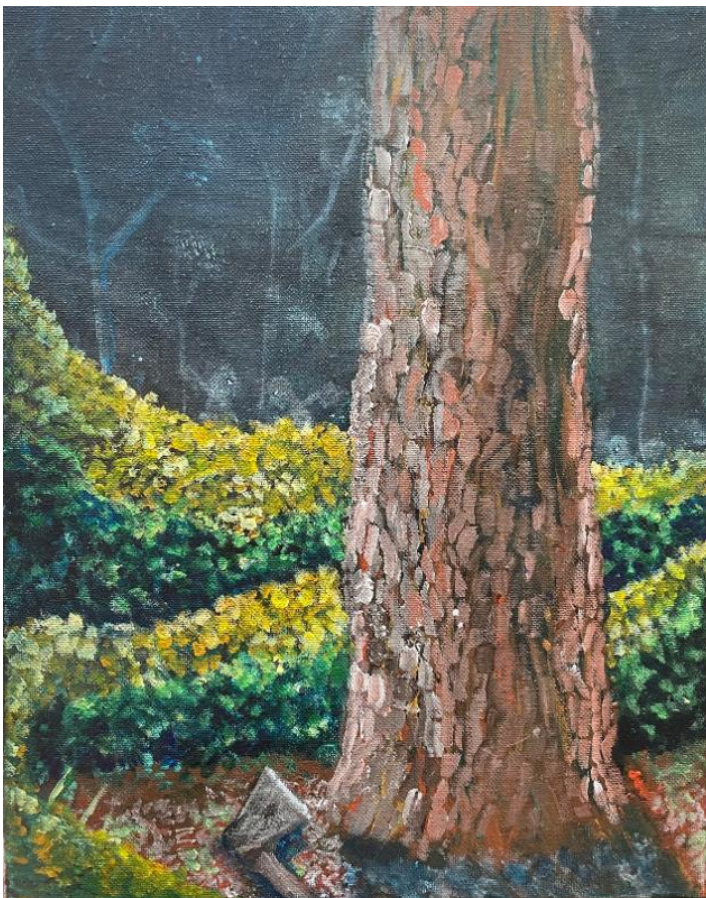
Height: 12 inches

Width: 12 inches

Idea(s): A long abandoned Irish castle, bushes clinging to the walls and grass emerging from the floor.

Material(s): Artist Loft acrylic paint, canvas, various sized brushes, sponge

Process(es): Blue underpainting, color basic shapes, shadows, highlights, detail, foreground to fill space



Work 4

Selected Works

Height: 14 inches

Width: 11 inches

Idea(s): The last tree in a forest, memories of lumberjacks and old, now-fallen trees faded in the background

Material(s): Artist Loft acrylic paint, canvas, various sized brushes

Process(es): black background with ghosts, flower bushes, tree, shadows, highlights, details, black wash



Work 5

Selected Works

Height: 14 inches

Width: 11 inches

Idea(s): An unfinished bridge, taken by nature, trees covering the sides, and a field growing from the rubble

Material(s): Artist Loft acrylic paint, canvas, various sized brushes

Process(es): Blue underpainting, bridge shape, surrounding bushes, grass, shadows and highlights, detail, sky